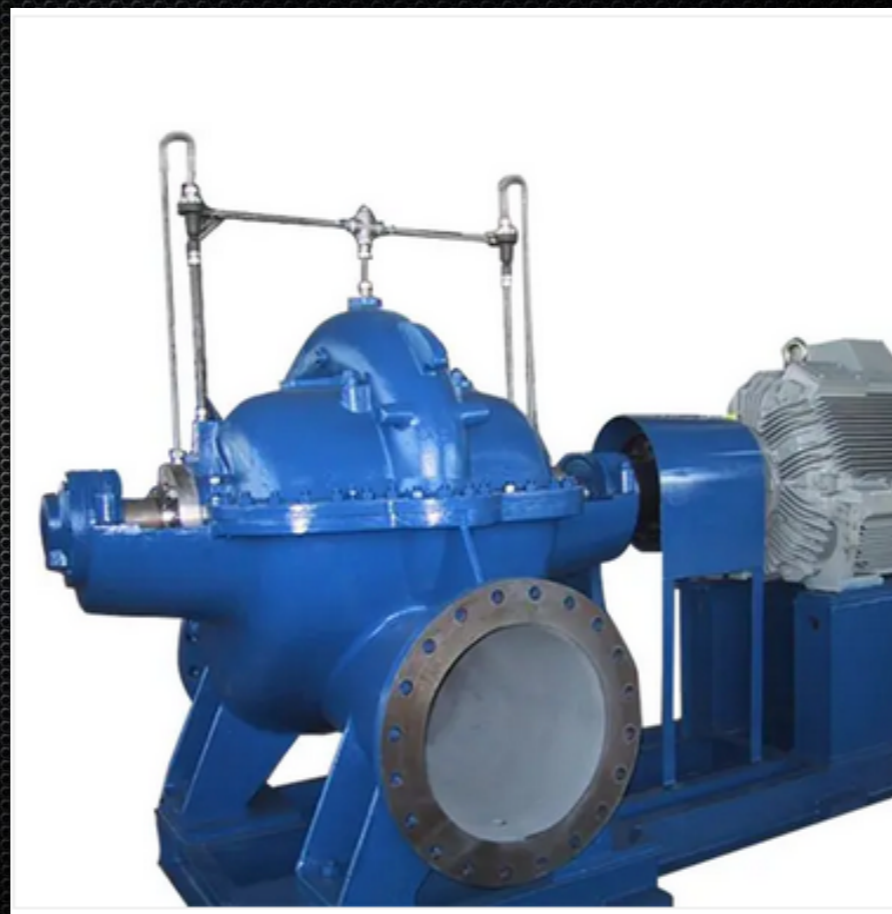


R22

Double suction split casing pump



About.

R22- Double suction split casing pump used for demanding high capacity industrial applications.

R22- have two types of impellers, closed and low pulse impellers.

R22- ensure process reliability, high efficiency and low operating costs.

Easy and quick installation, safe operation & easy maintenance and service.



Design.

1 Innovative casing

- In-line design
- Short distance between bearings and correspondingly short shaft
- Leak-free thanks to compact casing split flange with long prestressed bolts
- Change of the direction of rotation possible with identical parts
- All pump sizes with double volute
- Easy mounting of self-aligning upper casing

2 High performance impeller

- Minimum axial thrust due to double-entry impeller
- Optional impeller wear rings
- New vane passage with excellent hydraulic characteristics

3 Easy-to-service shaft

- Completely sealed and dry for zero corrosion
- Short and rigid with negligible vibrations
- Replaceable shaft protecting sleeves
- No threads exposed to pumped medium, i.e. long service life and no corrosion
- Assembly without requiring adjustment
- Fast and easy assembly/dismantling of the rotor components due to elastically prestressed mountings

4 Long-life bearings

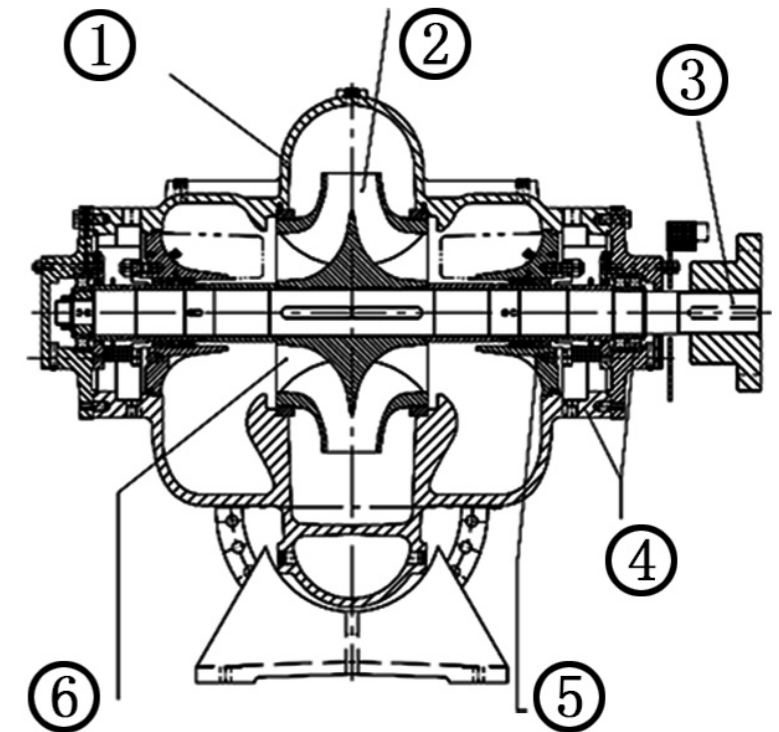
- Grease-lubricated rolling element bearings (allowing relubrication) for a long service life >100 000 h in all operating ranges
- Optional: oil lubrication
- Closed bearing brackets for low-noise and low vibration operation

5 Seals tailored to the application

- Asbestos-free gland packings meeting drinking water quality standards
- Split glands, i.e. ample space for servicing
- Optional: balanced mechanical seal

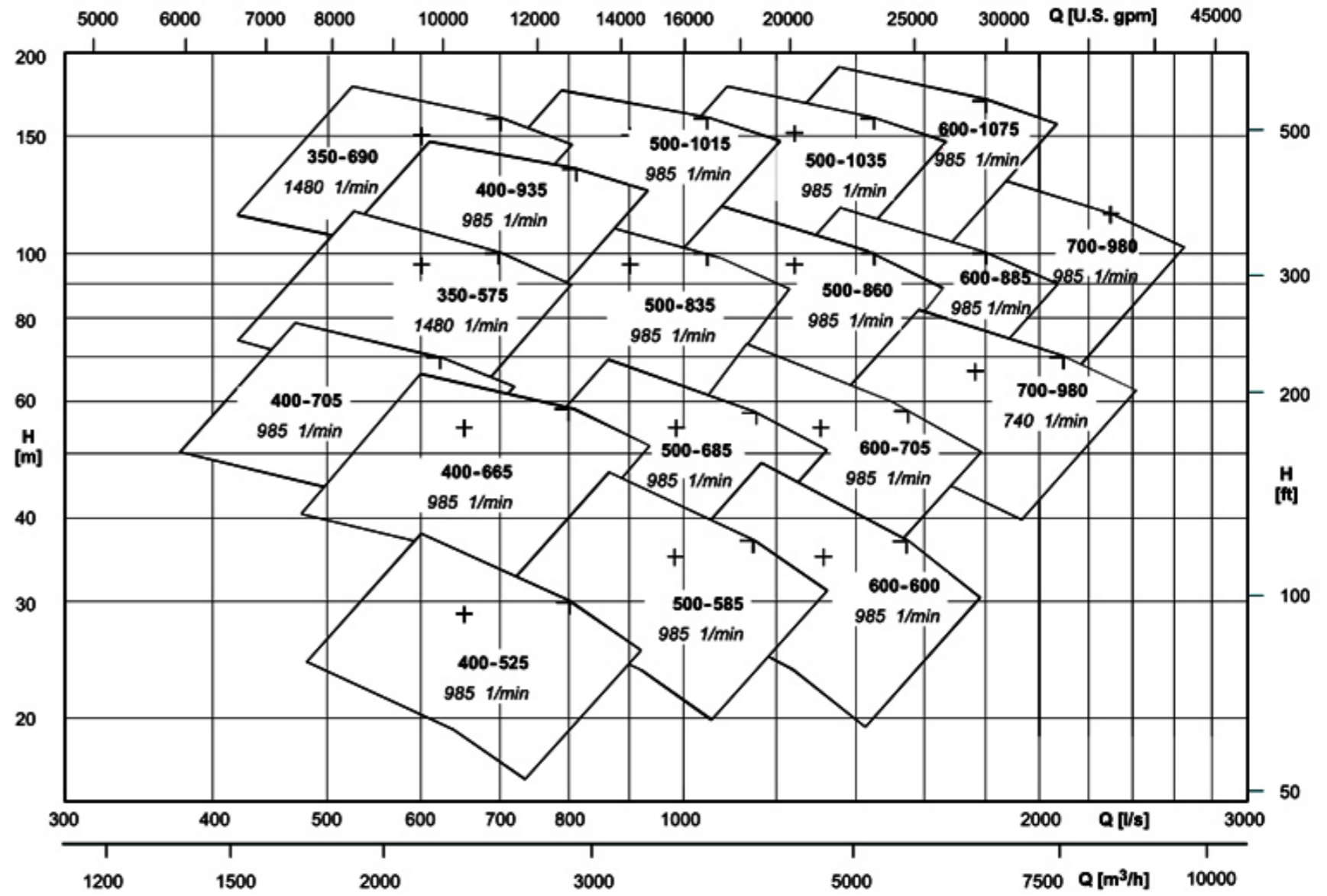
6 Excellent efficiency Outstanding NPSH values

- Computer-optimised double-entry impellers
- Smooth surfaces inside the casing and on the impeller
- Large inlet cross-sectional areas for optimum suction behaviour
- Consistently high efficiency due to replaceable profiled casing wear rings and impeller wear rings
- Quiet, low-wear running thanks to swirl-free intake elbow with low energy loss



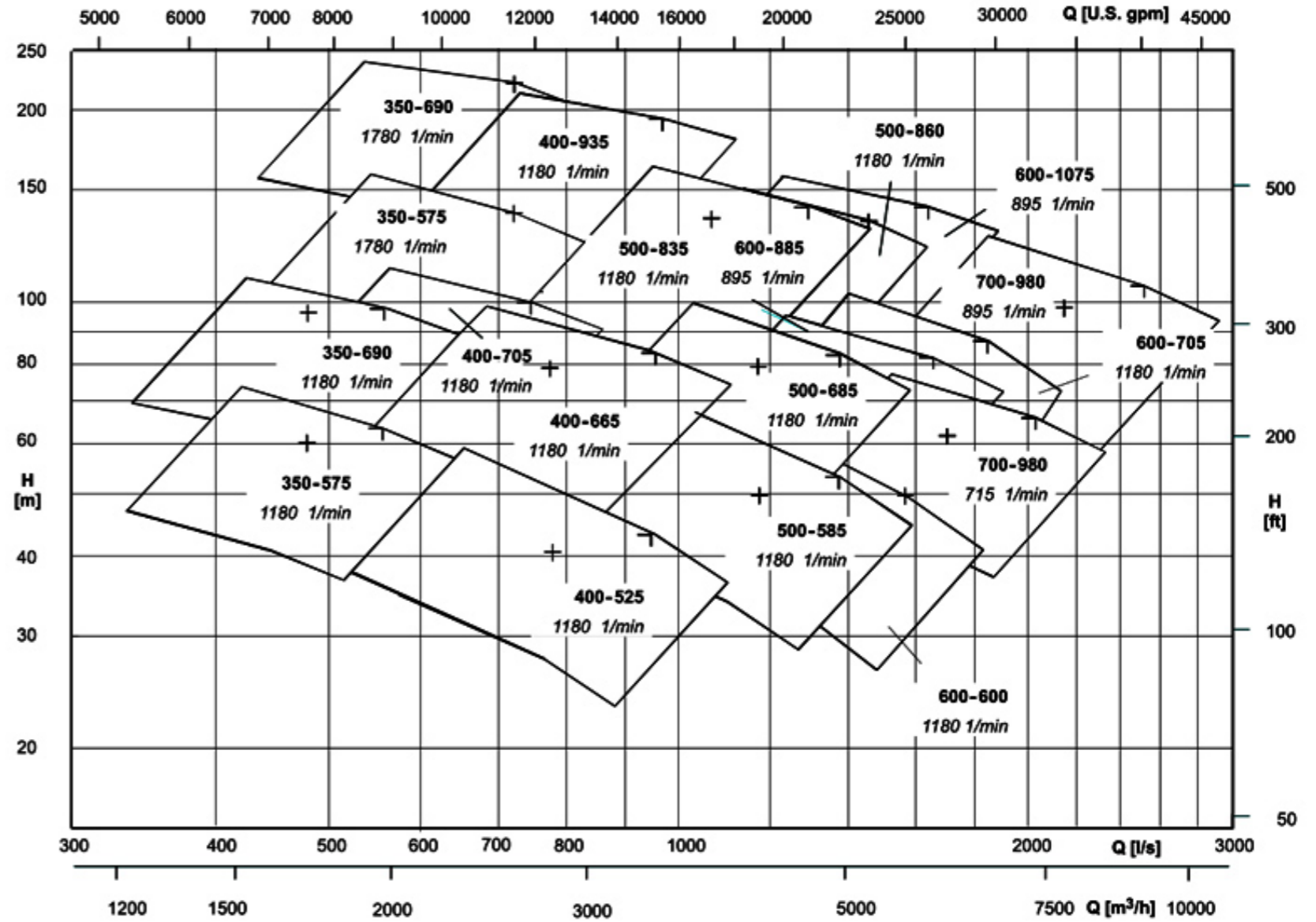


Characteristic 50 Hz .





Characteristic 60 Hz:





Application:

- Raw Water Supply
- Drinking water supply
 - Industrial Applications
 - Irrigation
 - HVAC and Cooling Tower
 - Marine and ship buildings
 - Cold Water Circulation
 - Pool Water
 - Condense Systems
 - Fire Fighting Systems

Specifications:

Speed: 2900rpm/ 1480rpm/1750rpm/3500rpm

Capacity: 68m³/h—18,000m³/h

Head: 7m—240m

Max Speed: 3500rpm (Diameter of impeller will be reduced)

Max Working Temperature: 105 °C

Working Pressure: Generally it is 1.6Mpa, It can rise to 2.4Mpa

Application Std: Flange std can be BS,DIN,ANSI,etc