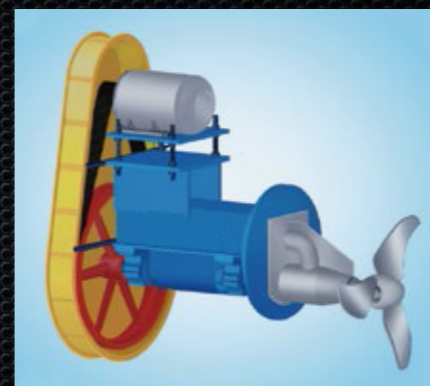


## Agitaor/Mixer



### Application:

It is applicable for storing and mixing circulation of the stock in pulping and papermaking industry.

### Design Features:

Small propeller diameter, high propeller rotation speed. It can produce big circulating capacity and lower specific electric consumption per unit. It can be normally used in the stock chest with stock consistency of 4.5%. The angle of propeller can be adjusted so as to increase or decrease stock circulation consistency. It is particularly suitable for waste paper stock. Simple and reliable structure, convenient for maintenance.

### RTM For konkrete chest



Model	RTM-0	RTM-0W	RTM-1	RTM-1W	RTM-2	RTM-2W	RTM-3	RTM-3W	RTM-4
Volume (M <sup>3</sup> )	10	50	15	100	28	150	40	275	60
Consistency(%)	≤4.5	≤4.5	≤4.5	≤4.5	≤4.5	≤4.5	≤4.5	≤4.5	≤4.5
Propeller Diameter(Mm)	φ500		φ600		φ750		φ850		φ1000
Motor Power(Kw)	5.5	7.5	5.5	11	7.5	15	11	22	18.5

Model	RTM-4W	RTM-5	RTM5-W	RTM-6	RTM-6W	RTM-7	RTM-7W	RTM-8
Volume (M <sup>3</sup> )	375	80	500	115	600	155	700	200
Consistency(%)	≤4.5	≤4.5	≤4.5	≤4.5	≤4.5	≤4.5	≤4.5	≤4.5
Propeller Diameter(Mm)	φ1000	φ1150		φ1350		φ1550		φ1700
Motor Power(Kw)	30	22	37	30	55	45	55	55

### Application:

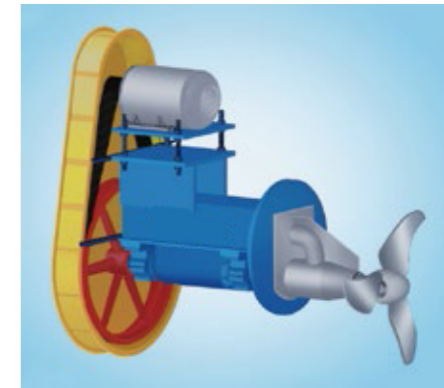
It is applicable to mix various types of pulps with low consistency in chest and steel pulp tanks.

### Design Features:

Small propeller diameter, high rotation speed, high circulating capacity. It can mix the pulp with low consistency efficiently in chests, especially in steel tanks. Simple and reliable structure, convenient for maintenance.

Stable performance & mix the pulp evenly with lower power consumption. The angle of the impellers can be adjusted. The impellers have been processed with loosen-proof treatment.

### RTM-X For steel chest



Model	RTM-X.06	RTM-X.08	RTM-X.10	RTM-X.13	RTM-X.16	RTM-X.20
Propeller Diameter(Mm)	600	800	1000	1300	1600	2000
Stock Consistency(%)	≤5%	≤5%	≤5%	≤5%	≤5%	≤5%
Working Speed(MPa)	320~400	220~300	180~250	160~200	120~180	80~130
Motor Power(Kw)	11	15	30	55	75	110

### Application:

The medium consistency mixer is used in medium consistency bleaching section of stock preparation process. It mixes chemicals, steam and pulp fully.

### Design Features:

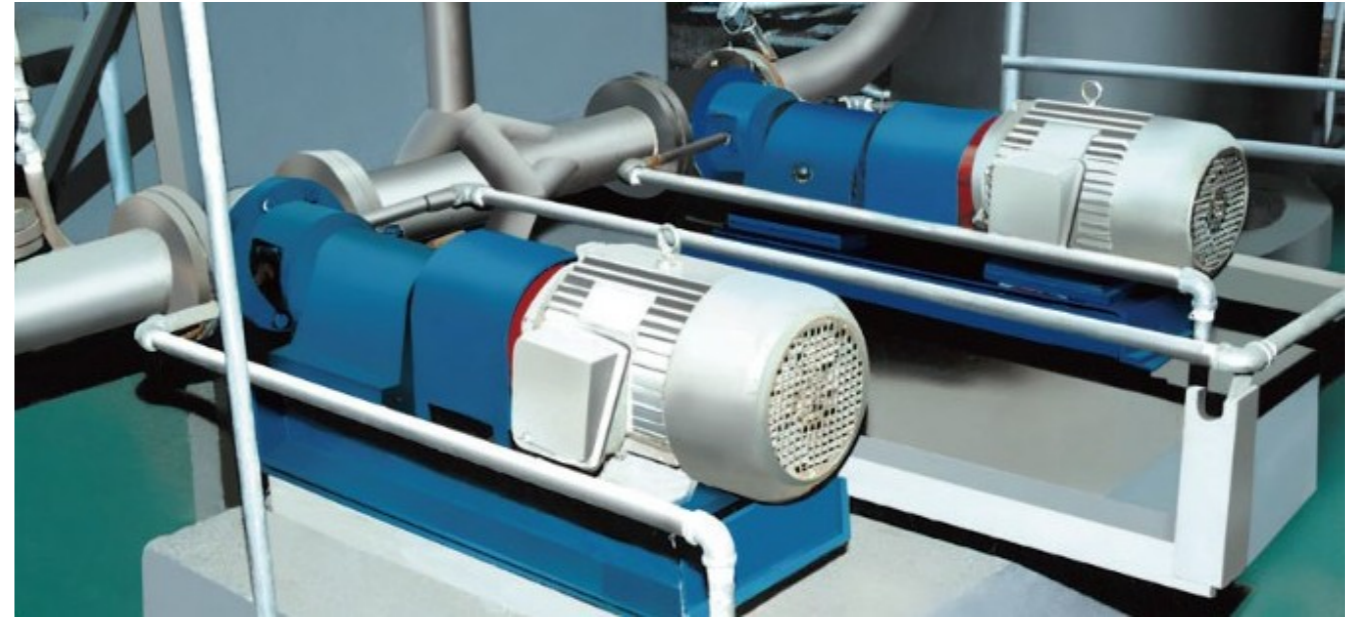
Adopt triple-blade rotor which helps in working efficiently. High speed rotation of rotor makes stock fluidization and destroys the network structure of fiber. It reaches the best mixing result. By adopting inner shell structure with spiral hooping avoids stock detaining in the shell and reduces pressure loss; The rotation direction of rotor is perpendicular to the flow direction of stock. It prevents bleaching agents from eduction and overflowing and saves chemicals;

It extends service life since parts contacted with pulp are made by stainless steel;

Inlet and outlet port can be adjusted on horizontal or vertical direction. It is simple to install and layout.

It lowers power consumption by cascading after M.C pump. Compared with other mixers, it can save 80% power.

### RTH Medium consistency mixer



Size	DN80	DN100	DN125	DN150	DN200
Working Temperature(°C)	≤120	≤120	≤120	≤120	≤120
Working Consistency(%)	8~14	8~14	8~14	8~14	8~14
Work Pressure(MPa)	≤0.6	≤0.6	≤0.6	≤0.6	≤0.6
Capacity (t/24h)	25~40	80~120	160~200	210~260	350~400
Motor Power (KW)	5.5	11	18.5	22	37